



FIBERS & FRAGMENTS

EVA VARGÖ エヴァ・ヴァリエ

Selected Works, 1998-2014

2014. 5/14_{WED.} → 6/12_{THU.}

Open 11:00 ~ 17:00 / 日曜休み Closed Sundays / 入場無料 Admission free

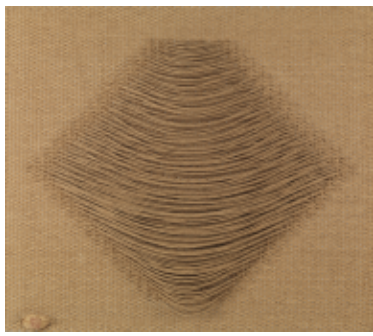
主催：学校法人城西大学 / 後援：スウェーデン大使館、日本スウェーデン協会

Organized by Josai University Educational Corporation / Supported by Swedish Embassy, Japan-Sweden Society

水田美術館
アートギャラリー
MIZUTA MUSEUM OF ART
ART GALLERY

学校法人城西大学 東京紀尾井町キャンパス3号棟
〒102-0093 東京都千代田区平河町 2-3-20 Tel.03-6238-8500
Josai University Educational Corporation,
Tokyo Kioi-cho Campus 3 Building
2-3-20 Hirakawa-cho, Chiyoda-ku, Tokyo 102-0093, Japan

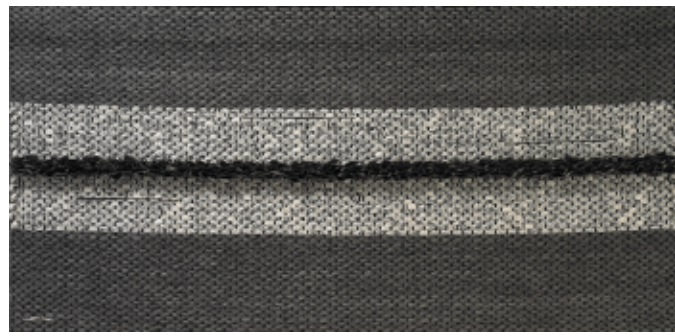
One Year, detail, 2010
紙織、韓紙紐、韓本
Paper weaving, Korean dak
cord, Korean book paper
55.0 x 95.0 x 6.0 cm



1



2



3

FIBERS & FRAGMENTS EVA VARGÖ Selected Works, 1998-2014

本学は世界各国の大学と国際交流を深めており、スウェーデンとも、ラーシュ・ヴァリエ駐日大使にご講演いただき、また戦時中多くのユダヤ人を救った同国の実業家ワレンバーグを称える植樹式を行うなど、積極的に交流してきました。さらなる文化・学術交流の発展を目指し、その一環として、このたび大使夫人で工芸作家であるエヴァ・ヴァリエの展覧会を開催します。

エヴァ・ヴァリエは、幼い頃に上の世代にならない手工芸に親しみ、最初の来日時に大学の被服学科に在籍し、その後、スウェーデンの職業訓練学校などでテキスタイル、機織りを学びます。紙糸や麻糸を素材として、「織り」の手法による紙工芸作品を制作し、これまでアメリカ、韓国、中国など、世界各国で作品を発表してきました。諸外国に移り住んだ経験を通し、近年では韓紙を用いるなど、滞在先の文化をとり入れて新しい表現を生み出しています。

本展では、日本の謡本を用いた作品を含め、1998年から2014年までに制作された作品を紹介します。裂かれ燃られて線や断片となった繊維が、あらたな意味と形を持って立ち現れるエヴァ・ヴァリエの作品世界をお楽しみください。

Josai University has a deep commitment to international exchange with universities around the world, including in Sweden. Josai has actively promoted international exchange with Sweden through hosting lectures by Swedish Ambassadors and through planting trees on its campus in memory of Swedish industrialist Raoul Gustaf Wallenberg, whose efforts during the war saved many Jews from death. Seeking to develop our cultural and academic exchange even further, on this occasion Josai is proud to host an exhibit of works by the fiber artist Eva Vargö, who is also the wife of the Ambassador of Sweden to Japan, Lars Vargö.

As a young girl, Eva Vargö was introduced to the pleasures of hand work by earlier generations. At the time of her first visit to Japan, she enrolled in a program of fashion design at a Japanese university, and after her return to Sweden she studied textiles and weaving at the HV vocational university. Utilizing materials such as paper and linen threads, she employed weaving techniques to create paper craft art that she has exhibited in the United States, South Korea, China, and other countries around the world. Inspired by her life experience in many foreign countries, she has discovered new forms of expression by integrating materials from wherever she is living into her work, most recently utilizing Korean dak paper.

In the current exhibit, works created in the years 1998-2014 are on display, including some that make use of Japanese Noh recitation texts. We hope that you will enjoy discovering the artistic world of Eva Vargö, where fibers—torn and twisted together—find new meaning and form.

1. *Contemplation V*, 1998, 紙織, 紙紐, Paper weaving, Paper string, 51.0 x 57.0 x 2.0 cm

2. *Download me*, 2012, 韓紙紐, 韓本, 墨, Korean paper cord, Korean book paper, Japanese ink, 48.0 x 48.0 cm

3. *Deadline I*, 2011, 紙織, 韓紙紐, 韓本, Paper weaving, Korean dak cord, Korean book paper, 55.0 x 95.0 x 6.0 cm

エヴァ・ヴァリエ

Eva VARGÖ

1956年スウェーデン生まれ

Born 1956, Sweden



1986-87 杉野服飾大学家政学部被服学科在籍 (東京)

Sugino Fashion College, Tokyo, Japan

1992-93 機織職業訓練 (スウェーデン・ウップランズヴェースビー)

Weaving as a profession, Vocational training, Upplands Väsby, Sweden

2000-02 手工芸職業訓練学校在籍 (テキスタイル、スウェーデン・ストックホルム)

HV College, Advanced Handicraft Education - Textiles, Stockholm, Sweden

個展/Solo Exhibitions

1998 "Wrapped Up," Sembikiya Gallery, Tokyo, Japan

2009 "In Flow Motion," Tong-In Auction Gallery, Seoul, Korea

2011 "Endlessness /stained stories/," Tong-In Auction Gallery, Seoul, Korea

グループ展 (抜粋)/Group Exhibitions (a selection)

1993 "Swedish Hand-Weaving and Swedish Laces," Swedish Embassy, Tokyo, Japan

1995 "Living with Swedish Textiles," Kawashima Textile Museum, Kyoto, Japan

1996 "NHK Heart to Hands Exhibition," Bunkamura, Tokyo, Japan

1998 "Fusion," Vartai Gallery, Vilnius, Lithuania

2004 "Svenska Konstnärer i Världen," Millesgården, Stockholm, Sweden

2008 The 35th Korean Crafts Council Exhibition 2008, Suwon, Korea

The 16th World Crafts Council Exhibition, Hangzhou, China

2009 "Between Art and Craft," Gallery MOA, Heyri Art Valley, Korea

2010 "Paper Road," 21st IAPMA Congress, Wonju, Korea

2011 "Swedish Contemporary Craft Art," Korea Foundation Cultural Center Gallery, Seoul, Korea

2012 "Paperworks: material as medium," Flynn Gallery, Greenwich, Ct., USA

"Retro/Prospective: 25+ Years of Art Textiles," browngrotta arts, Wilton, Ct., USA

2013 "Artfully Connected," Swedish Embassy, Tokyo, Japan

水田美術館アートギャラリー

学校法人城西大学

東京紀尾井町キャンパス 3号棟

【交通案内】

地下鉄有楽町線・麹町駅1番出口より徒歩5分

地下鉄半蔵門線・南北線・永田町駅9番出口より徒歩5分

地下鉄丸の内線・銀座線・赤坂見附駅D出口より徒歩8分

JR中央線・総武線・四ツ谷駅より徒歩12分

MIZUTA MUSEUM OF ART ART GALLERY

Josai University Educational Corporation, Tokyo Kioi-cho Campus 3 Building

【Access】

Tokyo Metro Yurakucho Line: 5 min walk from Kojimachi Station, exit 1

Tokyo Metro Hanzomon or Namboku Line: 5 min walk from Nagatacho Station, exit 9

Tokyo Metro Marunouchi or Ginza Line: 8 min walk from Akasakamitsuke Station, exit D

JR Chuo or Sobu Line: 12 min walk from Yotsuya Station

