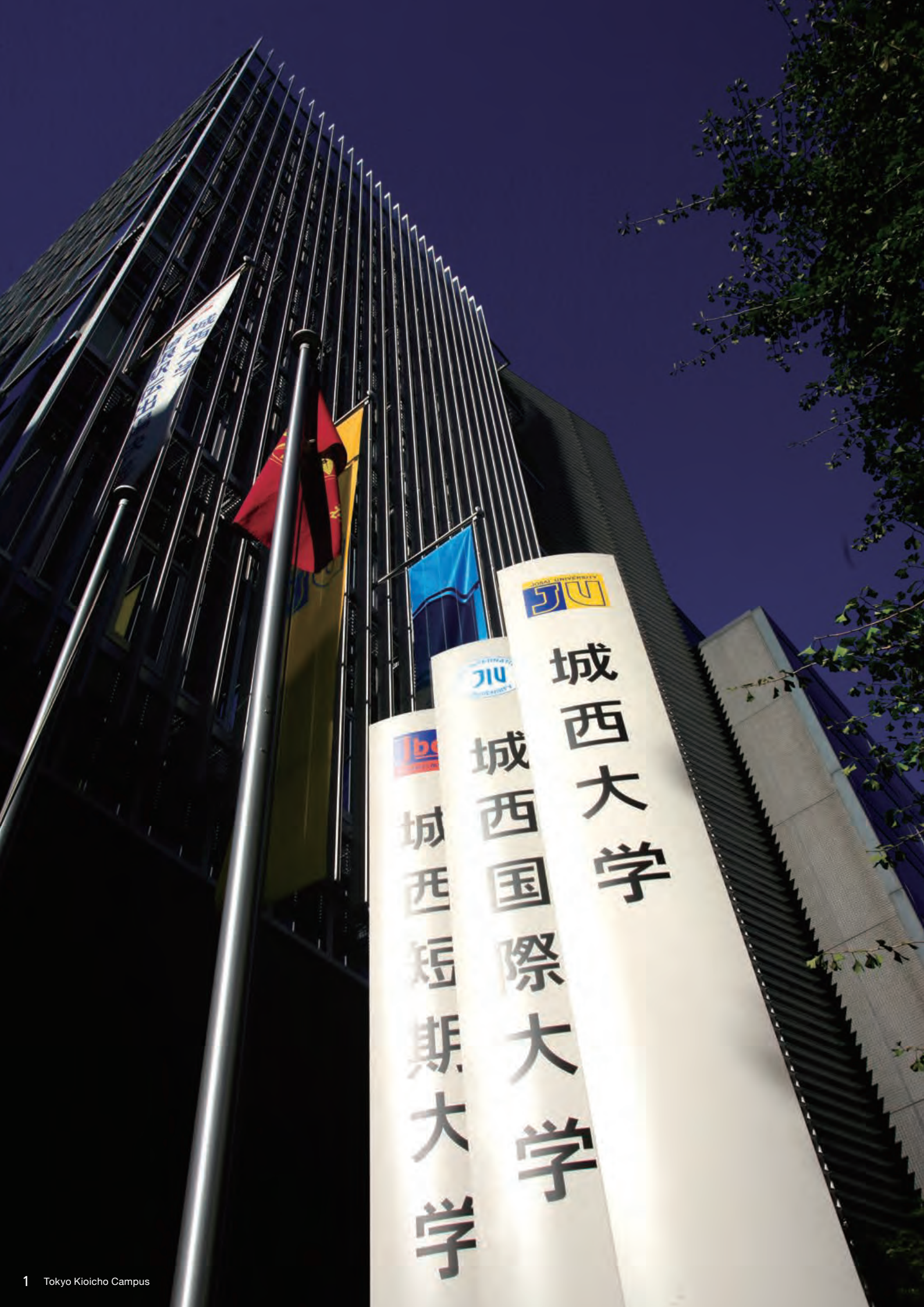




JOSAI UNIVERSITY EDUCATIONAL CORPORATION

JOSAI UNIVERSITY
JOSAI INTERNATIONAL UNIVERSITY
JOSAI BASE COLLEGE



城西大学



城西国際大学



城西短期大学

WHAT IS JOSAI ?

Cultivating the Challengers of the Future

Josai University was established in 1965, one year after the Tokyo Olympics. While promoting education with an awareness of student needs, such as qualifications and employment, we nurtured solid human resources responsible for the post-war reconstruction and globalization envisaged by our founder, based on the university's founding philosophy. To actively participate in an unpredictable future society, I believe it is extremely important to boldly tackle issues from an independent perspective and to have the ability to involve those around you. Accordingly, as we approach the 50th anniversary of our founding, I believe we should be a university with a presence in developing human resource leaders who have a global outlook and who will accept the challenge of resolving the issues of Japanese society will face in the future.

We plan to stimulate student's motivation to learn and encourage students to discover for themselves by providing opportunities to encounter values that differ from the environment in which they were raised and by enhancing efforts to build educational partnerships with sister schools overseas, as well as interactions with local communities focused on learning and internships that, up to now, have proven to be a success.

By making full use of the university's distinctive connections with local communities and overseas sister schools, as well as engaging in unique pioneering research activities, I hope to provide an educational program that gives students a chance to judge for themselves and aim to create an environment where students who are thought to be a little audacious can grow.

Akira Shirahata

Josai University, President

Profile :

Completed doctoral program at the University of Tokyo Graduate School of Pharmaceutical Sciences, Faculty of Pharmaceutical Sciences. Researcher at the Tokyo Biochemical Research Foundation. After working as a post-doctoral researcher at the Medical Center, Penn State University College of Medicine, he was appointed assistant professor in the School of Pharmacy at Josai University. After serving as professor, head of the School of Pharmacy and Vice President, he was appointed President in September 2016.



Human Resources Ingrained with a "Learning Attitude" Who Spread Their Wings in Society

Since its opening in 1992, Josai International University has evolved alongside the communities of Yamatake, Togane, Kujukuri and Kamogawa in Chiba Prefecture. There are now eight undergraduate programs and six graduate research programs, as well as special courses for international students and a Senior Wellness University for adults spanning three campuses located in Togane and Awa, as well as Kioicho in Tokyo. This substantial growth over the past 25 years has made Josai International into a university with the second largest student population in Chiba Prefecture.

Our university's parent organization, the Josai University Educational Corporation, was founded by Mikio Mizuta, an educator, politician and leader of Japan's economic growth after the war. Mikio Mizuta's motto in life was "Never lie, never deceive and never flatter." In keeping with his teachings, Josai International University is not merely a place for study and research, but also a place for young people to develop depth and breadth of character, and a sense of mutual respect. Indeed, the goal is not learning itself, but to develop depth and breadth of character, as expressed by our founding spirit of "Character Building through Learning."

I believe our students should become human resources ingrained with a "learning attitude," enabling them to spread their wings in society from both local and global perspectives. My hope is that ideas enabling the rise of innovation are enjoyably learned and ingrained here at Josai International University. Our entire faculty and staff will focus efforts on providing an education that allows students to gain career development skills commensurate with their years of study.

Kenji Sugibayashi

Josai International University,
President

Profile :

Completed Master's coursework majoring in Pharmacy and Pharmaceutical Sciences at the University of Toyama Graduate School of Medicine and Pharmaceutical Science. Earned PhD. (Gifu Pharmaceutical University). Studied at the University of Michigan and University of Utah in the United States. After serving as an instructor and associate professor, he was appointed professor in the School of Pharmacy at Josai University. After serving as head of the School of Pharmacy and being appointed as the Vice President of Josai University and Josai International University, he was appointed President of Josai International University in April 2017. Member of the Academy of Pharmaceutical Science and Technology, Japan, recipient of the Shukri Distinguished Keynote Lecture Award and The Japanese Society for Alternatives to Animal Experiments Award for Distinguished Service.



JOSAI IN FIGURES

Student body **14,438**
(All schools and campuses, as of May 2017)

Josai University Educational Corporation established

1965

Total number of graduates

103,760
(All schools and campuses, as of March 2017)

Josai University Women's Junior College opened

1983

Total campus area

593,400 m²
(About 12.7 times the size of Tokyo Dome,
Total of all three universities, as of May 2017)

Josai International University opened

1992

Number of books in library

760,000
(All schools and campuses, as of April 2017)



Overseas students accepted

1,688 from 22 countries and regions

(All schools and campuses, as of May 2017)

Overseas partner schools

171 in 30 countries and regions

(All schools and campuses, as of May 2017)

Foreign faculty members

39 from 16 countries and regions

(All schools and campuses, as of May 2017)

Female faculty members

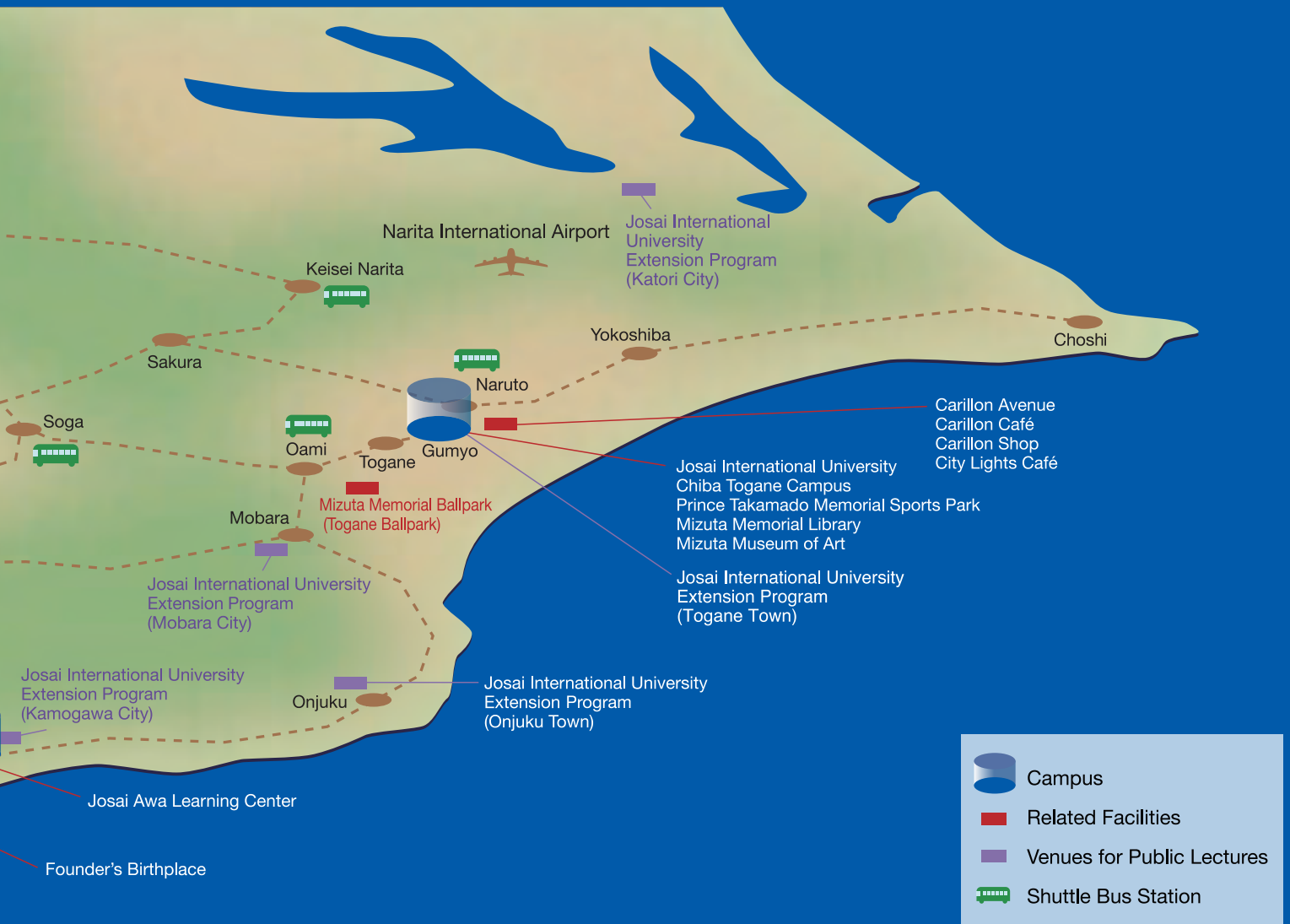
144

(All schools and campuses, as of May 2017)

Total doctorates awarded

193

(All schools and campuses, as of March 2017)





About Our Founder, Mikio Mizuta

Mikio Mizuta was born in 1905, in Awa County, Chiba Prefecture. After secondary education at Awa Junior High School and Mito High School, he earned his undergraduate degree at the Faculty of Law of Kyoto University.

During his years as a student, he participated in anti-war and anti-military movements. In 1946, he was elected to the first postwar House of Representatives. Later, as Minister of International Trade and Industry, and in five successive appointments as Minister of Finance, he dedicated himself for over 30 years to the development and growth of the Japanese economy.

As an elementary school teacher earlier in his career, he also believed that the future of his country depended on developing the talents, skills, and character of its young people. Hence his lifelong support for compulsory education and for publicly funded secondary and tertiary schools, as well as for government aid for private schools. In April 1965, to fulfill these educational ideals, he founded the Josai University Educational Corporation.

Mikio Mizuta's motto in life was "Never lie, never deceive, never flatter." The university he established is not merely a place for study and research, but also an incubator for a broad range of talents and skills—for young people to develop the depth and breadth of character, and the sense of mutual respect, to build a brighter future for themselves, their country, and the world.

Mizuta Museum of Art

The Mizuta Collection consists of over 200 works, mostly of the *ukiyo-e* genre, assembled by the politician, educationalist, and founder of Josai, Mikio Mizuta. The collection was donated to Josai in 1977 by the Mizuta family. The collected works allow the historical development to be traced from the early days of the *ukiyo-e* to modern Japanese painting. The collection also includes nine works by Sharaku, including rare woodblock prints.

The Mizuta Museum of Art operates facilities at Josai University, Josai Base College, and Josai International University, where it holds public displays of the Mizuta Collection, themed exhibitions, and other events, thus serving not only as a place of learning for students, but also as a cultural institution to be enjoyed by the local community.

“CHARACTER BUILDING THROUGH LEARNING”

“Scholarship itself,” said Mikio Mizuta, at ceremonies marking the inauguration of Josai University, “is not the goal; it is merely a means to build character. A good society can only be created by good people, so I have founded this university in the belief that my mission in life is to prepare our future generations to meet their responsibilities to their country and their communities.”

The legacy of this mission is shared by Josai University, Josai Base College and Josai International University. In the 50 years since Josai was created, while the world around us has changed greatly, our mission and core ideals—nurturing the talents and self-reliant resources our young people will need to contribute their utmost to 21st-century society—have not changed.

Josai’s Educational Power

1. Professional Qualifications

In fields such as pharmacy, dietetics, social welfare, and pre-school education, Josai excels in the preparation of highly qualified professionals, offering opportunities to develop these and other specialties at both the undergraduate and graduate levels, and in our various research institutes.

2. Core Skills and Practical Competencies

The education at Josai is designed to foster in our students the maturity, sense of decorum and public-mindedness demanded of them in an international society, and the basic social, practical and communication skills they will need in their individual careers. In sports and extra-curricular activities, we seek as well to promote the ideals of team spirit, fair play, self-development, and the pursuit of excellence.

3. Multi-Disciplinary and International Studies

The curriculum at Josai is designed to develop abilities to function effectively at the cutting edge in a range of different fields, through diverse international cultural experiences and through a multi-disciplinary learning program that cuts across traditional academic disciplines. In this way, we seek to foster creativity and innovation, problem-solving skills, the ability to understand others and to imagine the future, intellectual curiosity and individual sense of purpose, and a firm sense of personal and social responsibility.

4. Partnerships in Community

Through a broad spectrum of industry-academia-government partnerships, Josai seeks to strengthen its connections to society, and to develop a system of education within which our students and faculty can contribute actively to the local and regional community. To that end, we have put in place three programs we see as unique and essential elements of our curriculum: Field Study, Project Education, and Career Preparation.

Through these programs, our students acquire hands-on working experience at Japanese and/or international companies and public organizations, learn to cooperate with a diverse range of people, and develop their practical problem-solving and communication skills.



AN EDUCATIONAL COMPLEX OF THREE UNIVERSITIES AND FOUR CAMPUSES

Josai consists of three affiliated universities of arts and sciences—Josai University, Josai Base College, and Josai International University—with 19 departments in 13 faculties, two graduate schools with 10 advanced degree programs, and two affiliated preparatory courses and a total enrollment of some 14,000 students on its four campuses in the Greater Tokyo metropolitan area. The total area of the three university campuses is over 593,400 m².

In designing our faculties and departments, we look beyond the boundaries of traditional academic disciplines, bringing our own point of view—as an international institution rooted in the local community—to bear on the latest developments in the world of teaching and research. Our goal is to train students with the depth and breadth of understanding, the insight, and the specific professional qualifications to respond to the needs of society in a wide variety of careers.

Josai International University opened its Faculty of Nursing in April 2012. This faculty will develop a distinctive program of nursing education through its collaboration with other faculties, including the Faculty of Pharmaceutical Sciences and the Faculty of Social Work Studies, which are both closely connected to nursing, the Faculty of International Humanities, which fosters the ability for international communication, and the Faculty of Tourism, which aims for cutting-edge tourism.

■ Campuses and Facilities

Josai University Educational Corporation	
Tokyo Kioicho Administration Offices	Corporation headquarters Josai International Center for the Promotion of Arts and Sciences (JICPAS) Information Sciences Research Center Career Development Center
Josai University	
Saitama Sakado Campus Tokyo Kioicho Campus	Faculties of Contemporary Policy Studies, Economics, Business Administration, Science, Pharmaceutical Sciences (five faculties, eight departments) Graduate Schools (four programs, eight degrees) Foreign Students Affiliated Preparatory Course
Josai Base College (Junior College)	
Saitama Sakado Campus Tokyo Kioicho Campus	Business Administration

Josai International University	
Chiba Togane Campus Chiba Awa Campus Tokyo Kioicho Campus	Faculties of Management & Information Sciences, International Humanities, Social Work Studies, Pharmaceutical Sciences, Media Studies, Tourism, Social and Environmental Studies, Nursing (eight faculties, 10 departments) Graduate Schools (six programs, 11 degrees) Foreign Students Affiliated Preparatory Course
Educational and Training Facilities	
	Josai Awa Learning Center Kyonan Seminar House

Meanwhile, under the umbrella of JICPAS (see p. 20), Josai has established a range of research centers to carry out academic projects and international exchange programs across its three universities.

■ Research Centers

Institute for Gender and Women's Studies (Josai International University)	The Institute promotes a range of educational exchange and research programs in the field of women's studies and gender, within and without the university, in cooperation with the Women's Studies major of the graduate school.
Life Sciences Research Center (Josai University) (Josai International University)	The Center is designed for the conduct of safe and secure experiments in the life sciences for pharmaceutical research. It is used as the clean room for the Faculty of Pharmaceutical Sciences, as well as the contagion experiment lab, and the animal immunity lab.
Instrumental Analysis Center (Josai University)	To respond to the increasing sophistication of research in such fields as chemistry, pharmacology, and biology, more than 50 different types of the most advanced equipment for analysis and measurement devices are maintained here for use in experiments.
Isotope Center (Josai University)	The Center houses equipment and radiation measuring devices used in research on drug metabolism and in analytical chemistry.
Radioisotope Center (Josai International University)	
Center for Innovation (Josai University) (Josai International University)	The Center develops human resources and contributes to society through initiatives that include projects relating to collaboration between industry, academia, and government; university intellectual property; regional development; and joint projects with overseas universities.
Lifelong Learning Center (Josai University) (Josai International University)	The Center offers career development counseling for JIU students, in conjunction with faculty and departmental programs, extension courses for graduates and adult learners seeking new skills, and a community college with a wide range of curricula for the local community.



NEW HORIZONS, NEW WAYS TO LEARN

The skills and abilities that society demands of its young people are constantly changing. A university must evolve accordingly, with these needs at the core of its mission, and with innovative programs to prepare its students for useful and fulfilling careers. At Josai, these programs of professional development take three essential forms.

Three Pillars of Education

1. Field Study

Josai students take the theoretical learning they have acquired in the classroom into real-life situations, where on-site experience in the workplace provides depth and new perspectives to their academic work and allows them to develop their individual potentials.

2. Project Education

Josai students and teachers work together to design particular projects and define the means to complete them. In effect, they jointly develop the course of study, learning initiative and practical problem-solving skills as they do.

3. Career Preparation

Josai offers a wide range of preparatory courses and lectures for students who plan to sit for licensing and

qualifying examinations in their chosen fields. These courses do not merely “teach to the test,” but provide a broader understanding of the qualifications students are expected to bring to their careers.

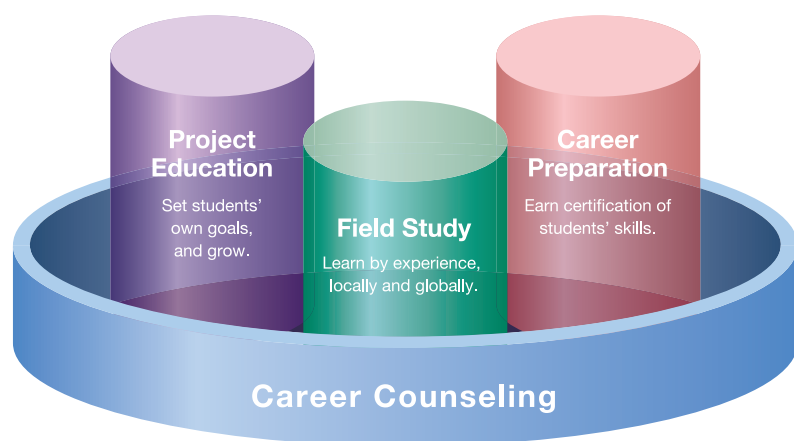
These three learning experiences comprise a support program shaping the career goals for each individual student, motivating his or her life-choices. Career counseling begins in the first year, and continues from the second with a variety of career-specific seminars and guidance programs. Additional support for language learning, vocational skills, and for test preparation, prepare our students well to enter society as competent professionals.

“Perspectives on the Future: Human Resources in the 21st Century,” a sponsored lecture series given at Josai International University in collaboration with corporations in the private sector, is yet another example of the support we provide for career development.

At Josai University, we work proactively to create opportunities for learning outside the classroom, with such programs as the Faculty of Sciences’ “Student Internship” and “Study Support Volunteers,” and the Faculty of Pharmaceutical Sciences’ “Josai University Pharmacy,” maintained in cooperation with the local community.

In post-graduate education, majors in both the Master’s and the Doctoral courses are centered on clearly defined research goals. The curricula offer a rich variety of programs for adult learners, and Teaching Assistantships are awarded for graduate students to work with faculty and advise undergraduates.

The Josai Pillars of Professional Development





Josai International University Faculty of Nursing



Student Support

Financial support at Josai is available from a variety of sources. All students are eligible to apply for the Mizuta Scholarship and the Mizuta International Scholarship, and students in the Faculty of Tourism may apply for the Mikio Mizuta Scholarship, the Tourism Human Resource Development Scholarship, and the Local Human Resource Development Scholarship. The Alumni Association also provides assistance through the Josai University and Josai International University Scholarships.

Josai has also established a Center for Women's Career Development, to promote the participation of women in a gender-equal society. The Female Leader Development Incentive System is offered to encourage the outstanding leadership qualities of our university women in both the student body and faculty.

DEVELOPING CORE QUALIFICATIONS AND PRACTICAL SKILLS

The Junior College as a Base College

In Japan, as elsewhere in the industrial world, the population pool for tertiary education is shrinking; at the same time, increasing numbers of university graduates are going on to study for advanced degrees. The demographic shift demands a new definition of the meaning and value of both vocational schools and junior colleges—many of which are now reorganizing themselves as four-year institutions. Now more than ever, we believe, there is a need for a two-year “base college” program for both men and women, to provide a viable alternative to the traditional four-year university curriculum.

The role of the base college, as a community institution, is to provide a greater range of choice—to respond to a greater diversity of needs—for basic introductory courses, practical and occupational skills, and university-track curricula offered over two years, for both younger and returning adult learners.

A Liberal Arts Education

A university’s responsibility to society is to foster not only a student’s knowledge of things, but his or her core qualities as well. The Liberal Arts and Sciences Center (LAS) at Josai International University was established to embed these core qualities in the curriculum: rational problem-solving, imagination, and a basic understanding of scientific and mathematical thinking. At Josai, we have created a set of minimum standards and goals for these core qualifications; the standards are applied in a system that enables our students to make the richest and most efficient use of their time at the university.

Adult Education

Students enrolled at Josai Base College may transfer on completion of their studies to the undergraduate or graduate schools of either of the two Josai group universities. Through our Lifelong Learning Center, open to both Josai students and members of the community, we offer extension programs at our Sakado and Tokyo Kioicho campuses in a wide range of fields for the acquisition of professional qualifications, the upgrading of career skills, and self-development through cultural and leisure pursuits.

Josai International University offers community college courses to the local community, and presents lectures open to the public at a number of locations in Chiba Prefecture, as part of our outreach to the wider community.

Josai University signed an agreement with Saitama Prefecture on continuing education in 2007, and welcomes senior citizens to attend university lectures, sharing their experience with our students.

Adult Education and Open Lecture Series





Tokyo Kioicho Campus Building No. 3 (front side)



Tokyo Kioicho Campus Building No. 3 (back side)

Overseas Partner Schools

South-West University (Bulgaria)
 Charles University in Prague (Czech Republic)
 Masaryk University (Czech Republic)
 University of Economics, Prague (Czech Republic)
 Karelia University of Applied Sciences (Finland)
 ESEEG School of Management, Université Catholique de Lille (France)
 Université Catholique de Lille (France)
 Université de Bourgogne (France)
 Université Paris-Est Créteil Val de Marne (France)
 University of Cologne (Germany)
 Budapest Business School (Hungary)
 College of Nyíregyháza (Hungary)
 Corvinus University of Budapest (Hungary)
 Eötvös Loránd University (Hungary)
 Károli Gáspár University of the Reformed Church in Hungary (Hungary)
 Semmelweis University (Hungary)
 Szent István University (Hungary)
 University of Debrecen (Hungary)
 University of Pécs (Hungary)
 University of Szeged (Hungary)
 University of Limerick (Ireland)
 University of Basilicata (Italy)
 Mykolas Romeris University (Lithuania)
 University of Bergen (Norway)
 University of Oslo (Norway)
 Polish-Japanese Academy of Information Technology (Poland)
 University of Lodz (Poland)
 University of Warsaw (Poland)
 SGH Warsaw School of Economics (Poland)
 Comenius University in Bratislava (Slovakia)
 University of Prešov (Slovakia)
 University of Nova Gorica (Slovenia)
 University of Primorska (Slovenia)
 Universitat Autònoma de Barcelona (Spain)
 Bath Spa University (United Kingdom)
 University of Essex (United Kingdom)
 Busitema University (Uganda)
 Camosun College (Canada)
 Saint Mary's University (Canada)
 University of British Columbia (Canada)
 California State University, Long Beach (USA)
 Riverside Community College (USA)
 Spelman College (USA)

Stony Brook University (USA)
 University of California, Los Angeles (USA)
 University of California, Riverside (USA)
 University of Hawai'i at Hilo (USA)
 University of Hawai'i at Mānoa (USA)
 University of Hawai'i Kap'i'olani Community College (USA)
 University of Hawai'i Leeward Community College (USA)
 University of Tennessee (USA)
 Western Michigan University (USA)
 Charles Sturt University (Australia)
 James Cook University (Australia)
 University of Technology Sydney (Australia)
 Beijing Film Academy (China)
 Beijing Foreign Studies University (China)
 Beijing Forestry University (China)
 Beijing Normal University (China)
 Bohai University (China)
 Capital Normal University (China)
 Changchun Normal University (China)
 Changchun Guanghua University (China)
 China Medical University (China)
 Chinese Academy of Social Sciences (China)
 City University of Hong Kong (China)
 College of Humanities & Sciences of Northeast Normal University (China)
 Communication University of China (China)
 Dalian Maritime University (China)
 Dalian Neusoft Institute of Information (China)
 Dalian Polytechnic University (China)
 Dalian University of Foreign Languages (China)
 Dalian University of Technology (China)
 Dongbei University of Finance and Economics (China)
 East China Institute of Technology (China)
 Guangdong University of Foreign Studies (China)
 Guangdong Women's Polytechnic College (China)
 Guangzhou College of Commerce (China)
 Guangzhou Vocational School of Tourism & Business (China)
 Hangzhou Normal University (China)
 Jiangmen Polytechnic (China)
 Jilin Teachers' Institute of Engineering and Technology (China)
 Kunming University of Science and Technology (China)
 Leshan Normal University (China)
 Liaoning University (China)
 Liaoning University of Technology (China)

Lingnan (University) College, Sun Yat-Sen University (China)
 Nankai University Binhai College (China)
 Ningxia Institute of Science and Technology (China)
 North China University of Technology (China)
 Northeastern University (China)
 Peking University (China)
 Shanghai University of International Business and Economics (China)
 Shaoguan University (China)
 Shaoying University (China)
 Shenyang Normal University (China)
 Shenyang Pharmaceutical University (China)
 Sichuan University of Science & Engineering (China)
 South China Agricultural University (China)
 South China Normal University (China)
 Sunshine College Fuzhou University (China)
 The Open University of Hong Kong (China)
 Tianjin Foreign Studies University (China)
 Tianjin University of Technology (China)
 University of Science and Technology Beijing (China)
 Wuyi University (China)
 Xi'an Fanyi University (China)
 Xi'an International Studies University (China)
 Xi'an Jiaotong University City College (China)
 Xi'an University (China)
 Yanbian University Medical College (China)
 Yantai University (China)
 Yibin University (China)
 Yunnan Normal University (China)
 Yunnan University (China)
 Yunnan University of Nationalities (China)
 Zhejiang Agriculture & Forestry University (China)
 Zhejiang International Studies University (China)
 Zhejiang University of Finance Economics (China)
 Zhejiang University of Media and Communications (China)
 Zhejiang University of Technology (China)
 Bucheon University (South Korea)
 Changwon National University (South Korea)
 Dongseo University (South Korea)
 Ewha Womans University (South Korea)
 Hankuk University of Foreign Studies (South Korea)
 Hannam University (South Korea)
 Hanyang Women's University (South Korea)

Incheon National University (South Korea)
 Konyang University (South Korea)
 Sogang University (South Korea)
 Suwon Science College (South Korea)
 Aletheia University (Taiwan)
 Feng Chia University (Taiwan)
 Hsiuping University of Science and Technology (Taiwan)
 National Kaohsiung University of Hospitality and Tourism (Taiwan)
 Taipei Chengshih University of Science and Technology (Taiwan)
 Tamkang University (Taiwan)
 Yu Da University (Taiwan)
 Institut Teknologi Bandung (Indonesia)
 Petra Christian University (Indonesia)
 Universitas Surabaya (Indonesia)
 Management and Science University (Malaysia)
 Universiti Malaysia Perlis (Malaysia)
 Universiti Teknologi Malaysia (Malaysia)
 Universiti Teknologi MARA (Malaysia)
 Universiti Tunku Abdul Rahman (Malaysia)
 University of Yangon (Myanmar)
 University of Foreign Languages, Yangon (Myanmar)
 Ateneo de Manila University (Philippines)
 University of San Carlos (Philippines)
 Bangkok University (Thailand)
 Burapha University (Thailand)
 Chulalongkorn University (Thailand)
 Eastern Asia University (Thailand)
 Rangsit University (Thailand)
 North-Chiang Mai University (Thailand)
 Siam University (Thailand)
 Silpakorn University (Thailand)
 Thai-Nichi Institute of Technology (Thailand)
 Thaksin University (Thailand)
 Walailak University (Thailand)
 Foreign Trade University (Vietnam)
 Ho Chi Minh City University of Technology (Vietnam)
 Ho Chi Minh City University of Technology and Education (Vietnam)
 Ho Chi Minh City University of Transport (Vietnam)
 University of Da Nang (Vietnam)
 Vietnam National University, Ho Chi Minh City (Vietnam)
 Daffodil International University (Bangladesh)
 Kathmandu University (Nepal)
 Tribhuvan University (Nepal)

INTERDISCIPLINARY SKILLS, INTERNATIONAL MINDSETS

Supra-Departmental Resources

Two forces emerging in the past few decades—the explosive growth of information technology and the globalization of cultures and economies—no university can ignore, if it is to send graduates with genuine promise into society. Two organizations at Josai, the Information Sciences Research Center and the International Education Center, support and supplement the teaching of these two areas on the departmental level.

1. Information Sciences Research Center

Established in 1968, the Center has three primary functions: insuring that Josai remains abreast of the latest developments in computer and IT technologies, supporting department programs in computer literacy education, and integrating communications throughout the university.

Housing the latest in digital television studios and linear editing rooms, the Center boasts one of the best education and research environments in Japan. Its state-of-the-art teleconference system provides us with the capacity to conduct a variety of meetings and remote-learning classes in real time among the Chiba Togane, Tokyo Kioicho, Awa, and Sakado campuses.

2. International Education Center

The International Education Center is the administrative hub for all the university's activities in international education and exchange. It serves as the liaison with our partner universities abroad, implements a broad range of student and faculty exchange programs, and organizes a variety of international symposia and seminars.

A Multilingual Experience

One of the most important elements of a liberal education is the experience of living abroad and mastering another language. The Josai Education Abroad Program (JEAP) provides a unique opportunity for our students to attend our overseas partner universities for terms up to a full academic year, transferring sufficient credits back to graduate on schedule.

At the same time, School of Japanese Language and Culture provides full-year courses in Japanese language and culture, both for short-term exchange students from our partner universities abroad, and for foreign students planning to earn

undergraduate or graduate degrees at Josai upon completion of the program.

In addition, the All-English BA Program at Josai International University allows students to take all their classes, from basic to specialist courses, in English.

Expanding the Horizons of Knowledge— Global Graduate School Education

Mizuta Graduate School of International Administration is a graduate school program for the new age established in the Josai International University Graduate School of Humanities. Combining professional training with research-oriented studies, the program offers a curriculum integrating all aspects from basic theory to career development and covers five specialized subject areas—policy studies, international studies, International Corporate Management, International Area Studies, Hospitality Management and Tourism. The goal of the program is to train true international citizens with a thorough specialist knowledge and a well-rounded general education. This degree program is available in both English and Japanese.

The Josai International University Graduate School of Humanities also offers other programs, including majors in Women's Studies, Management and Information Sciences, Social Work Studies, Business Design, and Pharmaceutical Sciences.

In keeping with its established reputation as "Global Josai," in May 2010 Josai established a Ph.D. course in partnership with three other universities—China's Dalian University of Technology and Dalian University of Foreign Languages, and Northeastern University. With the establishment of this Ph.D. program in International Japanese Studies within the Comparative Cultures Program at the Josai International University Graduate School of Humanities, the University has become an international center for Japan and Japanese-language studies.

Josai University has also established graduate programs in Economics, Business, Science (Mathematics & Material Science), Pharmaceutical Sciences (Pharmacy Specialty, Medical Pharmacy Specialty & Medical Nutritional Science Specialty).



Awa Campus, Josai International University



15 Josai Awa Learning Center, Josai International University

ROOTED IN THE LOCAL SOCIETY AND CONTRIBUTING TO IT THROUGH COOPERATIVE WORK BETWEEN INDUSTRY, ACADEMIA, AND GOVERNMENT.

Serving as a Center of Community

Josai has grown as an educational institution embedded in its community, reaching out to society and responding to public needs. JOSAI participates in cooperative undertakings between industry, academia, and government based on partnerships with the local community, with local governments, and with businesses. This involves a wide range of projects, which we implement to enrich student development and contribute to the local community. By systematically operating education and research programs that seek to resolve local community issues, we promoted the Education and Research Partnership Promotion Project, which aims to dramatically enhance the quality of education and improve our function as a Center of Community (COC) for local regions.

Josai University has worked cooperatively with the local community in a wide range of areas. Relevant initiatives include the Komagawa Project, a project to utilize idle land, cooperation in product development based on local specialty goods, building of a network with local libraries, and student internships. Additionally, we concluded basic cooperative agreements for partnership and collaboration with the local governments of the surrounding municipalities: Sakado, Moroyama, Ogose, Tsurugashima, and Hidaka. These projects will enable us to promote partnerships with the local community in a more systematic way.

Josai International University has concluded a partnership agreement in the tourism field with Chiba Prefecture, from which it takes on commissioned projects relating to tourism. Another project commissioned by Chiba Prefecture is a joint program for vocational training and development with the Togane Chamber of Commerce, through which consultation is provided to small and medium-sized enterprises within the Togane city area. The Faculty of Tourism is involved in a diverse range of initiatives for tourism development in our local municipality of Komagawa. The mainstays of this activity are restoration and preservation of avenues of cherry trees along the Mineoka Forest Trail which traverses the Boso Peninsula; and a project to create a tourist trail linking the sites of historic haiku monuments

Contributing through Health and Sports

We also undertake activities that contribute to the local community and society through healthy activities and sports. Josai International University operates the Senior Wellness College at the Chiba Togane Campus with the chief aim of encouraging senior citizens to maintain

their physical wellbeing. We also organize a kendo and judo tournament for high-school students and a soccer tournament for elementary school children at the Togane Campus, and a baseball tournament for elementary and junior high school children at the Awa Campus. These are part of our wide-ranging and deep-rooted partnerships with local residents, government authorities, educational institutions, health-related businesses, and other bodies.

The Josai University and Josai Base College Sports and Health Center was established in April 2005 to promote health and welfare in the community through sports. In April 2006, a joint project with the local community was launched called the Josai University Senior Wellness College. This project is contributing significantly to boosting levels of activity in the local community and society as a whole, and is coordinated with the government-led “Health Japan 21” program as well as the models of healthy nutrition and diet promoted by the university’s Faculty of Pharmaceutical Sciences.

Rollout of Partnership between Industry and Academia

In December 2007, we reached an agreement with ANA Strategic Research Institute Co., Ltd., to develop collaboration in training and research. As a result, we are implementing partnerships in human resources development in a wide range of areas, including not only the airline and logistics sectors but also other areas from hospitality and tourism to regional revitalization. In March 2011, we entered into a partnership with JTB Business World Tokyo Corp., which has led to a range of joint initiatives with the Josai International University Faculty of Tourism.

We have since agreed further partnerships: with Nikkatsu Corporation in June 2010, Apex Planning and Development Inc. in January 2011, and Sun Music Production Inc. in July 2013. These have resulted in diverse initiatives with the Josai International University Faculty of Media Studies.

Additionally, in July 2015 we formed a partnership with YOSHINOYA HOLDINGS CO., LTD. in the restaurant business and with Baroque Japan Limited in the fashion industry in April 2016, with such aims as the promotion of human resources development. Joint initiatives have begun between these partners and the Josai International University Faculty of Management and Information Sciences and others.



A DIVERSITY OF SETTINGS, A DIVERSITY OF VALUES

What Should a Campus Have to Offer?

We believe that a university campus should be an environment where students can learn, not only in the classroom but also from each other interacting with people from a diversity of backgrounds and circumstances: men and women, Japanese and non-Japanese, faculty and staff. Above all, a campus must offer a wide variety of learning experiences: fundamental, technical and practical. It must be a place for growth and self-discovery.

The architectural design and landscaping of Josai’s four campuses offer an important stimulus to the imagination and creativity of our students.

Award-Winning Campus

The Chiba Togane Campus won the Japanese Institute of Landscape Architects Award in 2006 for its “elegance, clarity, and extensibility”—qualities that continue to emerge as the campus continues to grow.

The Seiko Kaikan on our Saitama Sakado Campus received the 1992 Saitama Landscape Award, and our Kyonan Seminar House won no fewer than three distinctions: the 12th Chiba Prefecture Architectural Culture Award and an Award for Excellence in the 32nd Tokyo Architectural Awards and the Architectural Creation Concourse—Award for Excellence. Also, in 2008 the Faculty of Business Administration wing of Josai University and in 2012 the Mizuta Museum of Art won the Merit Award from the American Institute of Architects (AIA).

Facilities Open to the Public

The Josai Awa Learning Center was built with the cooperation of Kamogawa City, Chiba Prefecture; it comprises multi-purpose seminar rooms, an auditorium, computer facilities, lodging and a cafeteria, and is extensively used by both the university and the community. The Kyonan Seminar House was built on a hill in Kyonan Town, Chiba Prefecture, using the shell of an old middle school, and is a popular venue for student clubs and circles, as well as overnight seminars.

Achievements in Sports

A remarkable number of Josai athletes and teams have won recognition on the national level. Among them:

Josai University	
Yukiko Akabane <small>(BA, Economics Division, Faculty of Economics, 2002)</small>	Represented Japan in the 2008 Beijing Olympic Games, in the women’s 5,000-m and 10,000-m runs
Chisato Saito <small>(graduated from the Department of Clinical Dietetics and Human Nutrition)</small>	First prize in the 25th Universiade Women’s Half Marathon
Baseball Club	Three-time champions in the Tokyo Metropolitan Area University Baseball League (First Division)
Women’s Eikiden Relay Race Club	First prize twice in All Japan University Women’s Relay Race 2011: prize for sixth place, qualified for seeding
Men’s Eikiden Relay Race Club	Competed 13 consecutive years since 2004 in the Tokyo-Hakone-Tokyo College Ekiden Relay. 2015: prize for seventh place, qualified for seeding
Josai International University	
Surfing Club	A total of 26 team victories in the All-Japan Student Surfing Association Competitions
Tsubasa Nahana, Surfing Club <small>(Junior in the Faculty of International Humanities)</small>	First prize in the All Japan Surfing Grand Champion Games 2015
Soft Baseball Club	First prize in 2007, second prize in 2008, at the Japan University Nanshiki Baseball Federation Meet
Women’s Ekiden Relay Race Club	Placed third in the 2005 All Japan University Women’s Relay Race, gaining the right to be seeded four times
Wind and Brass Band	Bronze Award in the 2008 All Japan Band Competition
Baseball Club	Placed first in the Chiba Prefecture University Baseball League (Division One) for the fourth time
Soccer Club	2015 and 2017 winner of the Chiba Prefecture Soccer Championship Series

Slavnostní předávání doktorského titulu Honoris Causa • Pamětní přednáška
城西大学 名誉博士記授式・記念講演会
Předseda vlády České republiky, Bohuslav Sobotka
チェコ共和国 ボフスラフ・ソボトカ 首相
28 June, 2017 Univerzita Josai



Honorary doctorate awarded to Prime Minister of the Czech Republic



19 Mikio Mizuta Memorial Hall



New School of Pharmacy building

CLOSED-CIRCUIT BROADCASTING CAPABILITIES ENABLE JOSAI TO TAKE PART IN A RANGE OF LOCAL AND INTERNATIONAL ACTIVITIES

Josai International Center for the Promotion of Arts and Sciences (JICPAS)

The Center was established to coordinate Josai's support for academic research and international exchange at its affiliated schools.

The principal activities and projects of JICPAS are as follows:

- Promotion of global research and educational activities by universities/graduate schools
- Support and assistance of exceptional education/research
- Acquisition and development of external funds (scientific research grants, subsidies, and scholarships)
- Promotion of academic-private sector projects
- Promotion of academic partnerships and international exchanges
- Academic/cultural activities (lectures, conferences, symposia, etc.)
- Promotion of innovative projects
- Publishing of journals and research reports

In 2011, the Center for Graduate Studies and the Center for Innovation were established as part of JICPAS. They were joined by the Josai Institute for Central European Studies in 2013 and by the Josai Center for ASEAN Studies and the Josai Center for European Studies in 2015.

The Center for Innovation: A Partnership and Cooperation between Industry, Government and Academia in Response to Issues in Japan and Overseas

The Center for Innovation promotes activities in Japan and overseas for cooperation on contemporary issues between industry, government, and academia, with a view to problem-solving and creation of new value. The center is affiliated with the Japan Association of Corporate Executives, the Japan Chamber of Commerce and Industry, the Engineering Advancement Association of Japan, and other industry associations. Its activities include working on various exchange projects between industry, government, and academia, forming partnerships with local businesses, and operating exchanges with local governments.

In the field of overseas exchange, promoting exchanges with the ASEAN countries, and other activities include partnerships with the embassies of various countries to

promote academic and educational exchange.

International Conferences and Events

Josai's Tokyo Kioicho Campus hosts a wide range of international academic conferences and lecture meetings at its hall and conference center. The university also hosted a variety of events at its Sakado Campus in commemoration of its 50th anniversary.

- The World Women University Presidents Forum Japan Meeting (June 4, 2008)
- The first annual Japan-China Financial Forum JOSAI (December 20, 2010)
- The World University Presidents Forum, commemorating the 20th anniversary of the founding of Josai International University (April 29, 2012)
- Special lecture by Hungarian prime minister Viktor Orbán (November 21, 2013)
- Visegrad Four (V4)+Japan Security Seminar, V4+Japan Student Conference (February 4–5, 2014)
- International symposium “WAW! Tokyo 2014 Shine Weeks Event at Saitama” (September 16, 2014)
- Josai University 50th Anniversary Uppsala-Josai Joint Symposium “Women's Studies and Literatures in Sweden and Japan” (March 30, 2015)
- 50th Anniversary Concert of Josai University (April 20, 2015)
- 50th Anniversary keynote lecture by former Malaysian Prime Minister Mahathir bin Mohamad (May 21, 2015)
- 50th Anniversary keynote lecture by Ezra F. Vogel, Professor Emeritus at Harvard University (June 13, 2015)
- 50th Anniversary commemoration ceremony (October 31, 2015)
- 50th Anniversary World University Presidents Forum (November 1, 2015)
- 50th Anniversary International Symposium on Japanese Culture “Textures of Sound” (January 13–14, 2016)
- Roundtable discussion and poetry readings “Unruly Cradle: Poetic Responses to the March 11, 2011 Disasters” (March 11, 2016)
- Commemoration of the 50th anniversary of Josai University–Mikio Mizuta Memorial Global Award presented to American art collector Joe Price (February 2, 2017)
- Honorary doctorate awarded to Bohuslav Sobotka, prime minister of the Czech Republic (June 28, 2017)

PROMOTIONS



Mizuta Museum of Art, Josai University



21 Prince Takamado Memorial Sports Park, Josai International University

TOWARDS THE LEADING UNIVERSITY OF JAPAN, ASIA AND THE WORLD (“7 J-VISION”)

Setting and Achieving Medium-Term Objectives

The Josai University Educational Corporation was founded in 1965, during Japan's postwar reconstruction period, by Mikio Mizuta, a statesman and educator who helped build the foundation for a new Japan. Since its inception, the Corporation has worked actively to develop human resources and enhance education at Josai University, Josai Base College, and Josai International University under its philosophy of contributing to the welfare of humanity by fostering the human resources required for the development of society, based on its founding spirit of “Character Building Through Learning.” More than 100,000 of its graduates, equipped with the intelligence needed by the global society, are now active in a number of fields both at home and abroad, as human resources who can contribute to the real world.

In 2016, the year the Corporation passed the milestone of its 50th anniversary, it established a set of medium-

term objectives for 2016–2020—the “7 J-Vision” targets—to carry on its past initiatives and take a step towards new achievements, with a view encompassing the next 50 years. We will continue striving to improve character building and liberal arts education, in line with our founding spirit. We will also work actively to provide conscientious and detailed education, attending to the individuality of each and every student, and education that clearly places Japan in the world, in an effort to foster human resources who can contribute to Japan and the world.

Concept of the Medium-Term Objectives

The “7 J-Vision” medium-term objectives constitute a blueprint for the Josai University Educational Corporation to move forward united as one, and comprise seven goals. These goals are inter-connected and will have a synergistic effect, which we expect to come to fruition in 2020.

Medium-Term Objectives for becoming a leading university in the world (2016-2020) 《“7 J-Vision”》

- 1. Expanding the horizons of students' capacity to serve society**
- 2. Developing human resources with an international mindset and extensive knowledge of Japanese culture**
- 3. Continually improving the quality of educational programs, and collaboration directly connected to local and international communities**
- 4. Improving our research capabilities and promotion of innovation**
- 5. Enriching the campus environment through internationalization and networking**
- 6. Establishing a stronger university governance system to support dynamic development of education, research and social contributions to the community**
- 7. Strengthening the impact of our communication capabilities and social presence**



Tokyo Kioicho Campus Building No. 3



CULTURE AND SPORTS PROMOTION, EDUCATIONAL FACILITY EXPANSION

Josai is presently focusing on the expansion and improvement of educational, cultural and sports facilities on its several campuses, and on strengthening its international exchange and information transmission capabilities.

Completion of Tokyo Kioicho Campus Building No. 3

The Tokyo Kioicho Campus in central Tokyo opened in 2005 as a link between the Sakado Campus of Josai University and Josai Base College, and the Chiba Togane, Awa campuses of Josai International University. Since then, undergraduates and postgraduates at all three schools have taken courses offered on the Tokyo Kioicho Campus.

Kioicho serves as well as a location for facilities such as the Placement Center, Josai International Center for the Promotion of Arts and Sciences, the Women's Center, and the Lifelong Learning Center. Beyond providing students with a broad range of support for research, international exchange, and career placement, these facilities are involved in proactive transmission of information through a range of symposia and lectures. Building No. 2, which combines seminar facilities with accommodations for faculty and guests, was completed in the same area in 2007, further expanding the functionality of the campus.

Building No. 3, completed in April 12, 2013 in a district of Tokyo at the center of politics, culture, and global information, will further strengthen the university's efforts to develop internationally minded human resources with a breadth and depth of specialization. The building has five floors above ground and one basement. Apart from its complement of classrooms and studios, the building has a conference room on the fifth floor equipped for real-time, on-line international conferences and global networking. The basement houses a fossil gallery, and is open to the local community and the general public.

Mizuta Museum of Art, Josai University

The Mizuta Museum of Art at Josai University was founded in 1979. As a project to mark the 45th anniversary of the founding of the Josai University Educational Corporation, the collection was moved to a new building of its own on December 9, 2011.

The two-story building has three galleries with a total floor area of 670 m². Housing the permanent collection of the university's *ukiyo-e* woodblock prints, the museum will also host a range of activities addressed to the local community, such as exhibitions of the culture of Sakado and Saitama Prefecture, where the university is located. The museum makes a unique contribution to education and research at Josai, and we hope it will serve the local community as a resource of discovery and delight.

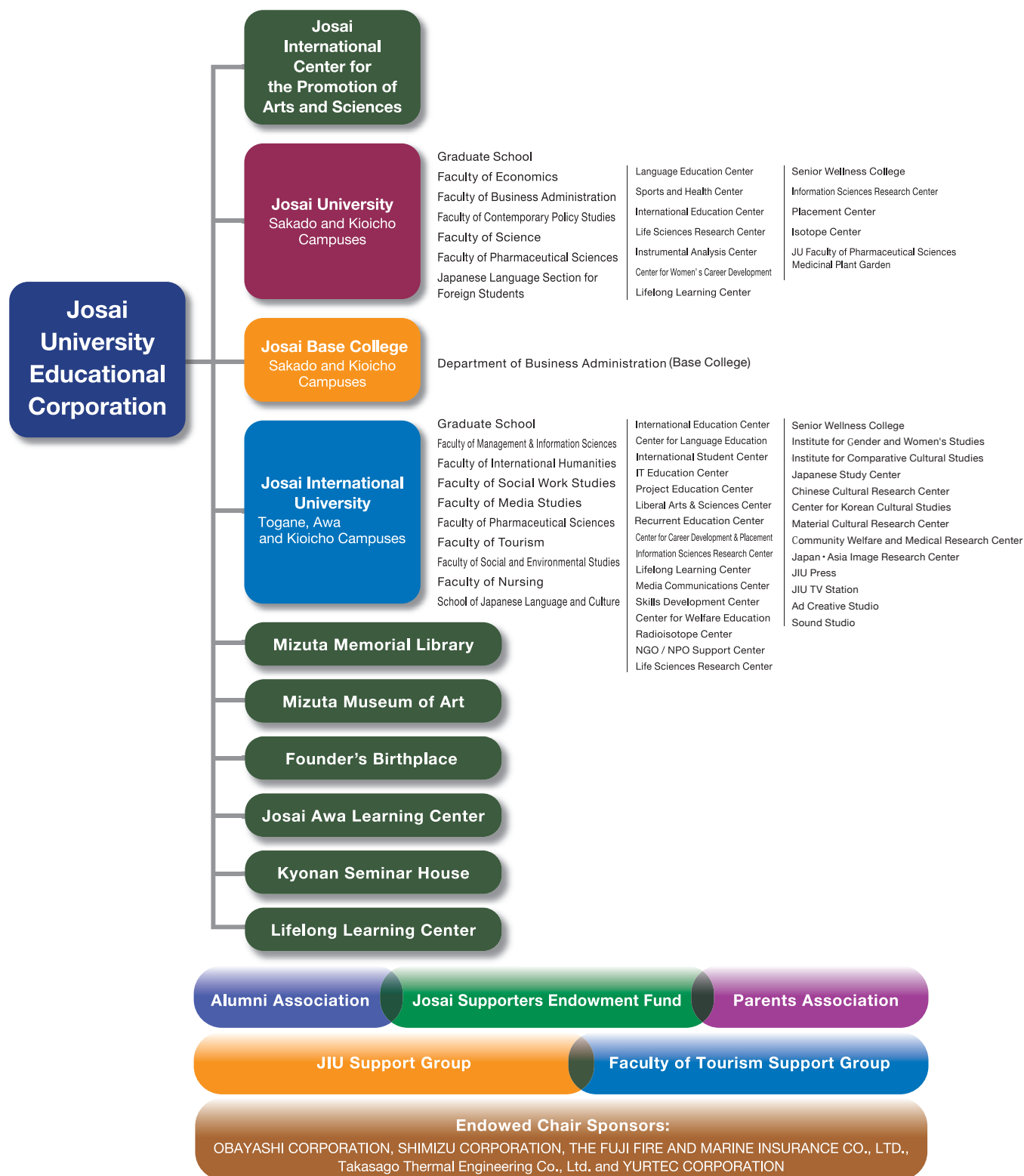
Prince Takamado Memorial Sports Park, Josai International University (JIU)

One of the projects undertaken to mark the 20th anniversary of JIU was a sports park, completed on May 22, 2012. To commemorate the achievements of His Imperial Highness the Prince Takamado, who passed away in 2002, in promoting sports and international exchanges, the park was named the Prince Takamado Memorial Sports Park.

With an area of 33,000 m², the park is adjacent to the university's Chiba Togane Campus. The facilities include a soccer pitch that can be used for championship matches, with a clubhouse and a multi-purpose turf ground. The park is also equipped for use at night and offers seating for spectators.

The Prince Takamado Memorial Sports Park will be used by the university soccer club, for programs to train young people and encourage sports in the community, and as a venue for activities to deepen international goodwill and exchange through sports.

ORGANIZATION OF JOSAI



Josai Supporters Endowment Fund

The Endowment Fund was inaugurated on November 1, 2007 to seek ongoing support for the further development of education and research at Josai. Donations are welcome from students at the university, graduates, parents of current students or graduates, faculty and staff, members of the community, or businesses. Gifts to the fund are eligible for tax incentives.

Josai: A History

1965 Jan 25	Founding of Josai University Educational Corporation approved (First Chancellor: Mikio Mizuta)
Apr 01	Josai University (JU) opened with the Faculty of Economics including the Department of Economics, and the Faculty of Science including the Department of Mathematics and the Department of Chemistry. (First JU President: Mikio Mizuta)
1971 Apr 01	Department of Business Administration in the Faculty of Economics of Josai University opened
1973 Apr 01	Josai University: Opened Department of Pharmaceutical Sciences and Department of Pharmaceutical Technochemistry in the Faculty of Pharmaceutical Sciences
1976 Dec 27	Seiko Mizuta appointed second chancellor of the Corporation
1977 Apr 01	Josai University: MA degree program inaugurated in the Graduate School of Pharmaceutical Sciences
1978 Apr 01	Josai University: MA degree in Economic Policy established in the Graduate School of Economics
1979 Mar 25	Josai University: Mizuta Museum of Art opened
Apr 01	Josai University: PhD program established in Pharmaceutical Sciences
1983 Apr 01	Josai Women's Junior College opened
	Majors in Administration and Secretarial Services in the Department of Business Administration, and in Japanese Literature and English & American Literature in the Department of Literature
1985 Apr 01	Center for Inter-Cultural Studies and Education established
1987 Apr 01	Major courses at the JU Women's Junior College (Major course in Japanese Literature, Major Course in English Literature) opened
1989 Apr 01	Major courses at the JU Women's Junior College (Major course in Administration, Major Course in Secretarial Services) opened
1990 Apr 01	Josai University: Japanese Studies Program established. Major courses in Japanese Culture and Japanese Language
1992 Mar 10	Completion ceremony of construction work for Josai International University
1996 Apr 01	Josai International University: Department of Welfare and Culture and Department of International Exchange Studies in the Faculty of Humanities opened
	MA degrees in Inter-Cultural Studies and in Women's Studies established in the Graduate School of Humanities
1998 Apr 01	Josai International University: PhD in Comparative Culture, (Graduate School of Humanities), MBA in Management of Entrepreneurial Ventures (Graduate School of Management and Information Sciences) and Affiliated Preparatory Courses in Japanese Culture and Japanese Language (Japanese Studies Program) established
	Josai University: MA in Mathematics (Graduate School of Sciences) and MS in Medical Pharmacy (Graduate School of Pharmaceutical Sciences) established
1999 Apr 01	Josai International University: Department of International Management Studies and Department of Information for Welfare and Environment established in the Faculty of Management and Information Sciences
2000 Apr 01	Josai International University: PhD in Management of Entrepreneurial Ventures (Graduate School of Management and Information Sciences) established
2001 Apr 01	Josai International University: Department of Service Management Systems (Faculty of Management and Information Sciences), Department of Media & Culture Studies (Faculty of Humanities), Special Course in Business and Information Science (Japanese Studies Program) established
	Josai University: Department of Medical Nutrition (Faculty of Pharmaceutical Science) established
	Josai Women's Junior College: Departments of Management and Information Administration and of Contemporary Culture opened (reorganized)
2002 Apr 01	Josai International University: MA in Welfare and Social Studies (Graduate School of Humanities), MBA in International Administration established
	Completion ceremony of the restoration works of the birthplace of the Mikio Mizuta as a project to commemorate the 40th anniversary of the founding of Josai University
2003 Jan 25	Restoration of Mikio Mizuta's birthplace completed, as Josai University's 40th anniversary project
Apr 01	Josai University: MBA in Business Innovation (Graduate School of Business Administration) established
2004 Apr 01	Josai University: Department of Management Studies (Faculty of Business Administration), MA in Material Science (Graduate School of Sciences) established
	Josai International University: Department of Medical Pharmacy (Faculty of Pharmaceutical Science), Departments of Culture and Social Work Studies and of Management and Social Work Studies (Faculty of Social Work Studies) established
Apr 10	Kyonan Seminar House completed
Apr 19	Josai Awa Learning Center completed
May 27	Noriko Mizuta takes office as chancellor of Josai University Educational Corporation
2005 Jan 21	Josai University Educational Corporation Tokyo Kioicho Campus Building completed
Apr 01	International Center for the Promotion of Arts and Sciences (JICPAS) established
	Josai University: MA in Medical Nutrition (Graduate School of Pharmaceutical Sciences) established
	Josai International University: Department of Management Science (Faculty of Management and Information Sciences) reorganized; Department of Media and Information (Faculty of Media Studies), Business Design Program (Graduate School of Business Design and Welfare and Social Studies Program (Graduate School of Social Work Studies) established
2006 Apr 01	Josai University: Department of Social and Economic Systems (Faculty of Contemporary Policy Studies), Departments of Pharmaceutical Science six-year and four-year programs (Faculty of Pharmaceutical Sciences) established
	Josai Base College: Department of Business Studies established
	Josai International University: Department of Wellness Tourism (Faculty of Tourism), Department of Medical Pharmacy six-year program (Faculty of Pharmaceutical Sciences) inaugurated
2007 Apr 01	Josai International University: Department of Social Work Studies (Faculty of Social Work Studies) reorganized
Oct 25	Josai University Educational Corporation Tokyo Kioicho Campus Building No. 2 opened
2008 Apr 01	Josai International University: Department of Inter-Cultural Studies and Department of International Exchange Studies opened in the Faculty of International Humanities
2009 Jun 30	Statement issued announcing the opening of the Department of Social and Environmental Studies in the Faculty of Social and Environmental Studies
2010 Apr 01	Josai International University: Department of Social and Environmental Studies opened in the Faculty of Social and Environmental Studies
Apr 16	Ceremony to mark the 45th anniversary of the founding of Josai University Educational Corporation
2011 Apr 01	Course in Visual Arts established in the Faculty of Media Study, Josai International University
Apr	Josai University Educational Corporation Tokyo Kioicho Campus Building No. 4 opened
Jul 22	Josai University Educational Corporation Center for Innovation established
Oct	Josai University Educational Corporation Center for Graduate Studies established
Dec 09	Josai University Mizuta Museum of Art (premises) opened
2012 Apr 01	Josai University Graduate School of Pharmaceutical Sciences Pharmacy Graduate Course Pharmacy Specialty (later doctoral course) and Pharmacy Specialty (doctoral course) established
	Josai International University Graduate School of Pharmaceutical Sciences Clinical Pharmacy and Pharmaceutical Sciences (doctoral course) established
	Josai International University Faculty of Nursing Department of Nursing established
Apr 28	Ceremony to mark the 20th anniversary of the founding of Josai International University
May 22	Josai International University Prince Takamado Memorial Sports Park completed
2013 Apr 01	Josai International University: Master's degree program in International Administration established in the Graduate School of International Administration, and master's degree program in Global Communications established in the Graduate School of Humanities
Nov 21	Institute for Central European Studies established
2015 Feb 12	Josai University Educational Corporation Campus Building No. 5 opened
Oct 31	Josai University Educational Corporation's 50th anniversary commemoration ceremony
2016 Apr 01	Josai International University Faculty of Social Work Studies Department of Physical Therapy established
Dec 01	Motoyuki Ono takes office as executive dean of Josai University Educational Corporation
2017 Mar 28	Josai University: Mikio Mizuta Memorial Hall and new School of Pharmacy building completed

Issued: July 2017

Josai University Educational Corporation

URL: <http://www.josai.jp/>

Tokyo Kioicho Campus

3-26 Kioicho, Chiyoda-ku,
Tokyo 102-0094, Japan
Tel: +81-3-6238-1300

Josai University Josai Base College

URL: <http://www.josai.ac.jp/>

Sakado Campus

1-1 Keyakidai, Sakado-shi,
Saitama 350-0295, Japan
Tel: +81-49-286-2233

Josai International University

URL: <http://www.jiu.ac.jp/>

Chiba Togane Campus

1 Gumyo, Togane-shi, Chiba 283-8555, Japan
Tel: +81-475-55-8800

Awa Campus

1717 Futomi, Kamogawa-shi,
Chiba 299-2862, Japan
Tel: +81-4-7098-2800